

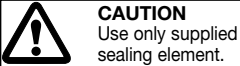
Product Instructions

viega

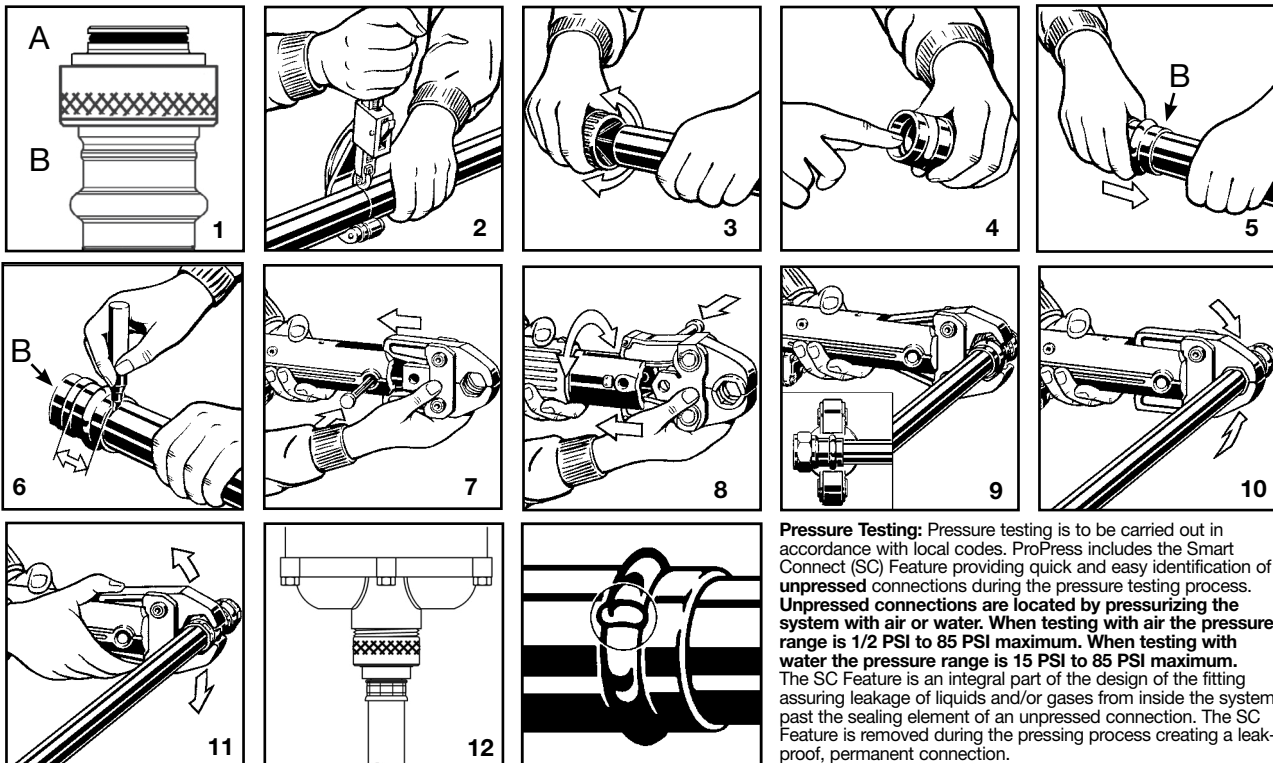
Zero Lead ProPress® by MANABLOC® Supply Adapter Connection

⚠️ WARNING

Read and understand all instructions for installing ProPress fittings. Failure to follow all instructions may result in extensive property damage, serious injury or death.



PROPPRESS CONNECTION MUST BE COMPLETE BEFORE ATTACHING THE SUPPLY ADAPTER TO THE MANABLOC.



Pressure Testing: Pressure testing is to be carried out in accordance with local codes. ProPress includes the Smart Connect (SC) Feature providing quick and easy identification of **unpressed** connections during the pressure testing process. **Unpressed connections are located by pressurizing the system with air or water. When testing with air the pressure range is 1/2 PSI to 85 PSI maximum. When testing with water the pressure range is 15 PSI to 85 PSI maximum.** The SC Feature is an integral part of the design of the fitting assuring leakage of liquids and/or gases from inside the system past the sealing element of an unpressed connection. The SC Feature is removed during the pressing process creating a leak-proof, permanent connection.

1. Ensure sealing element (A) is in place.
2. Cut copper tubing at right angles using displacement type cutter or fine-toothed steel saw.
3. Remove burr from inside and outside of tubing to prevent cutting sealing element.
4. Check seal for correct fit. Do not use oils or lubricants. Use only ProPress Shiny Black EPDM or Dull Black FKM Sealing Elements.
5. While turning slightly, slide press fitting (B) onto copper tubing. **Note: End of tubing must contact stop.**
6. Mark proper insertion depth at end of press fitting (B) as shown. Improper insertion depth may result in improper seal.
7. Insert appropriate Viega jaw into the pressing tool
8. Push in holding pin until it locks in place
9. Open the jaw and place at right angles on the fitting. Visually check insertion depth using mark on tubing.
10. Start pressing process and hold the trigger until the jaw has engaged the fitting.
11. After pressing, the jaw can be opened again.
12. Ensuring the sealing element (A) is clean of any dirt or debris, wet sealing element with tap water. Insert fitting into the desired MANABLOC inlet/outlet port until the fitting flange sets flush with the port. Thread the nut onto the MANABLOC inlet/outlet port, hand tighten only. **DO NOT OVER TIGHTEN.**

"Zero Lead" identifies Viega products meeting the lead free requirements of California and Vermont law, effective January 1, 2010, as tested and listed against NSF- 61, Annex G

Viega... The global leader in plumbing and heating systems.

301 N. Main, 9th Floor • Wichita, KS 67202 • Ph: 800-976-9819 • Fax: 800-976-9817 • E-Mail: insidesales@viega.com • www.viega.com