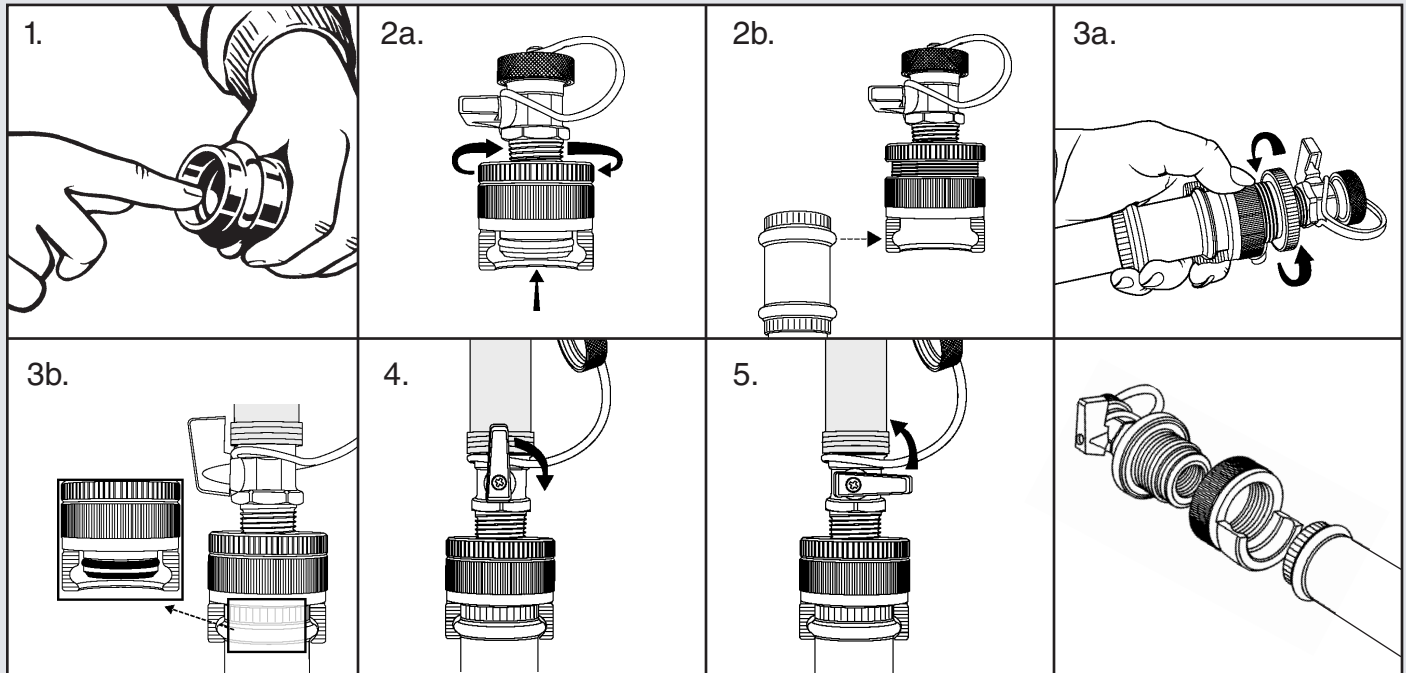


Product Instructions

Bronze Pressure Test Plug



Applications

The Bronze Test Plug was designed to be inserted into an unpressed ProPress fitting end for pressure testing. These fittings are to be removed after testing leaving the ProPress end usable for a final press connection.

1. Ensure that the interior of the fitting end is clean and clear of debris.
2. Loosen Test Plug fitting adapter to the point that it can be easily installed over the fitting bead.
3. While holding Test Plug fitting adapter stable, tighten Test Plug body (by turning clockwise) until it is firmly seated in the fitting end.
4. Ensure valve is open and apply test pressure, by utilizing the 3/4" hose threads on the Test Plug Valve. To maintain test pressure, close Test Plug Valve.
5. Pressure can be relieved after testing by opening Test Plug valve.

ProPress Bronze Pressure Test Plugs are available in sizes ranging from 1/2" to 2"

ProPress Bronze Pressure Test Plug pressure rating: 200 PSI Max.

VIEGA... *The global leader in plumbing and heating systems.*

301 N. Main St., Floor 9 • Wichita, KS 67202 • Ph: 877-Viega-NA • Fax: 1-800-976-9817 • E-mail: service@viega.com • www.viega.com