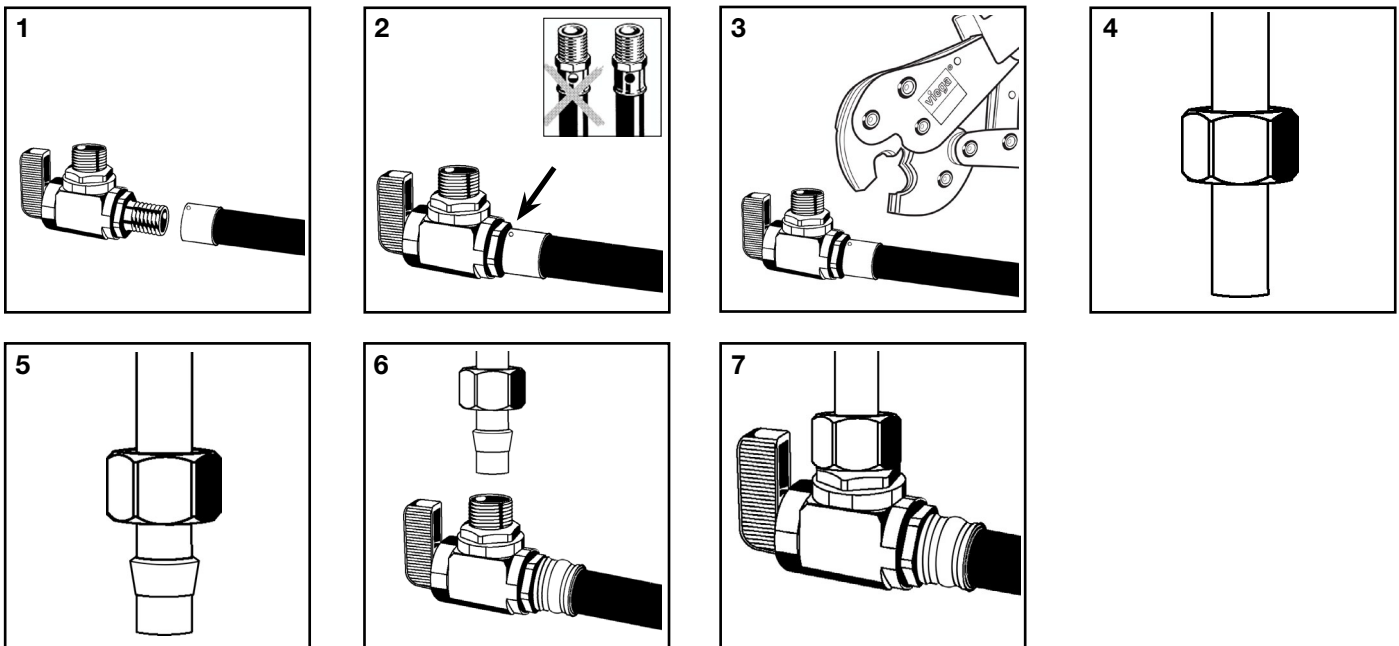


Product Instructions

viega

PureFlow® Zero Lead PEX Press x Compression Straight and Angled Stop Valves



Turn off main water supply.

1. Slide Viega PEX Press sleeve onto tubing (sold separately).
2. Insert PEX Press barb into tubing and engage fully. Ensure full tubing insertion at view hole in press sleeve. Full insertion means tubing must be completely visible in the view hole.
3. Press connection using appropriately sized Viega press tool. See current PureFlow water systems installation manual for additional pressing information.
4. Slide compression nut onto riser tube with threads facing toward end of tubing that will connect to valve.
5. Slide plastic ferrule (supplied with ViegaPEX™ riser) onto riser tube with longer tapered portion of ferrule toward valve.

Note: Use included brass ferrule when connecting to copper risers only. Plastic riser ferrule is directional and must be installed in the correct direction to ensure a proper seal.

6. Insert tube into valve and bottom tube in socket.
7. While holding tube fully inserted in bottom of compression fitting, slide ferrule and nut to valve and thread nut onto valve hand tight. Tighten nut one full turn using a suitable wrench.

“Zero Lead” identifies Viega products meeting the lead free requirements of California and Vermont law, effective January 1, 2010, as tested and listed against NSF- 61, Annex G

Viega... The global leader in plumbing, heating and pipe joining systems.

301 N. Main, 9th Floor • Wichita, KS 67202 • Ph: 800-976-9819 • Fax: 800-976-9817 • E-Mail: insidesales@viega.com • www.viega.com