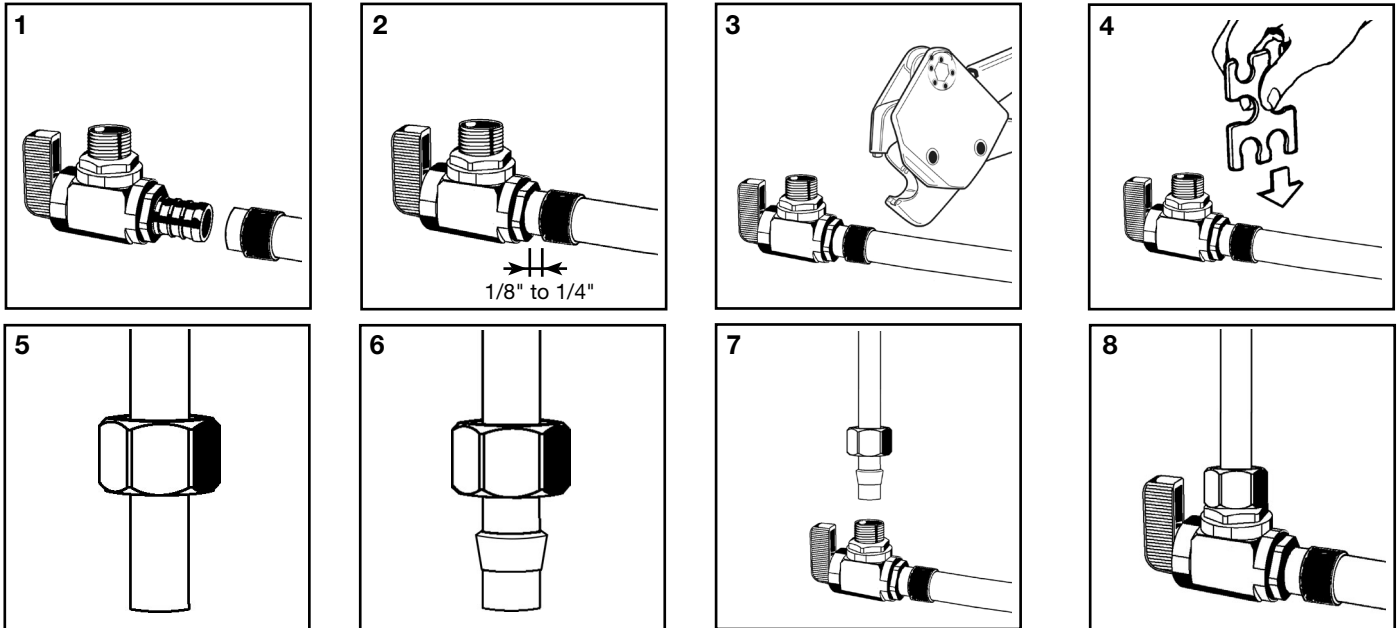


# Product Instructions

viega

## PureFlow® Zero Lead PEX Crimp x Compression Straight and Angled Stop Valves



Turn off main water supply.

1. Slide crimp ring onto supply tube. Insert valve into tubing and engage fully.
2. Position crimp ring 1/8" to 1/4" from end of tubing.
3. Center the crimp tool jaw over the ring. Keep the tool at 90° and close the handles completely.  
**DO NOT CRIMP TWICE.**
4. Check crimp connections with a GO/NO GO gauge. A crimp is acceptable if the GO gauge fits the ring and the NO GO does not. See current PureFlow water systems installation manual for additional crimping information.
5. Slide compression nut onto riser tube with threads facing toward end of tubing that will connect to valve.
6. Slide plastic ferrule onto PEX riser tube with longer tapered portion of ferrule towards valve.  
**Note: Use included brass ferrule when connecting to copper risers only. Plastic riser ferrule is directional and must be installed in the correct direction to ensure a proper seal.**
7. Insert tube into valve and bottom tube in socket.
8. While holding tube fully inserted in bottom of compression fitting, slide ferrule and nut to valve and thread nut onto valve hand tight. Tighten nut one full turn using a suitable wrench.

"Zero Lead" identifies Viega products meeting the lead free requirements of California and Vermont law, effective January 1, 2010, as tested and listed against NSF- 61, Annex G

**Viega... The global leader in plumbing, heating and pipe joining systems.**

301 N. Main, 9th Floor • Wichita, KS 67202 • Ph: 800-976-9819 • Fax: 800-976-9817 • E-Mail: insidesales@viega.com • www.viega.com

PI-PF-560573 0811 (ZL Crimp Compression Valves)