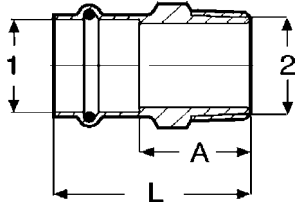


Dimensional Documentation

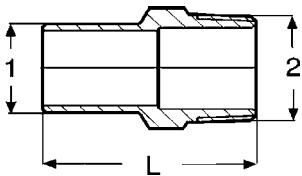
viega

ProPress® G



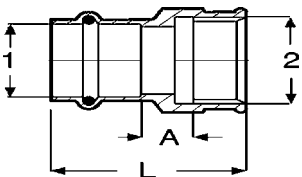
Bronze Adapter P x M - Model 0611

Stock Code	Size	A (in)	A (mm)	L (in)	L (mm)
	1 2				
16043	1/2" x 3/8" NPT	0.965	24.5	1.713	43.5
16048	1/2" x 1/2" NPT	1.122	28.5	1.870	47.5
16053	3/4" x 3/4" NPT	1.181	30	2.087	53
16058	1" x 1" NPT	1.457	37	2.362	60
16063	1-1/4" x 1-1/4" NPT	1.535	39	2.559	65
16068	1-1/2" x 1-1/2" NPT	1.535	39	2.953	75
16073	2" x 2" NPT	1.673	42.5	3.248	82.5



Bronze Adapter FTG x M NPT - Model 0611.1

Stock Code	Size	L (in)
	1 2	
23203	1/2" x 1/2" NPT	1.949
23208	3/4" x 3/4" NPT	2.047
23218	1" x 1" NPT	2.224
23223	1-1/4" x 1-1/4" NPT	2.539
23228	1-1/2" x 1-1/2" NPT	2.894
23233	2" x 2" NPT	3.189



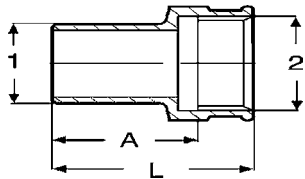
Bronze Adapter P x F - Model 0612

Stock Code	Size	A (in)	A (mm)	L (in)	L (mm)
	1 2				
16078	1/2" x 1/2" NPT	0.291	7.4	1.575	40
16083	3/4" x 1/2" NPT	0.331	8.4	1.772	45
16088	3/4" x 3/4" NPT	0.390	9.9	1.850	47
16093	1" x 1" NPT	0.480	12.2	2.047	52

Viega... The global leader in plumbing and heating systems.

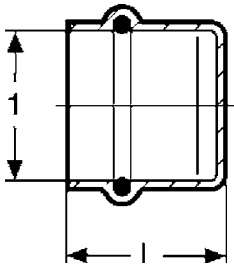
Dimensional Documentation

viega



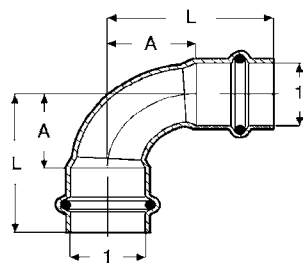
Adapter FTG x F NPT - Model 0612.1

Stock Code	Size	A (in)	L (in)
	1 2		
23238	1/2" x 1/2" NPT	1.217	1.752
23243	3/4" x 3/4" NPT	1.276	1.831
23253	1" x 1" NPT	1.327	1.988
23258	1-1/4" x 1-1/4" NPT	1.504	2.185
23263	1-1/2" x 1-1/2" NPT	1.878	2.559
23268	2" x 2" NPT	2.118	2.815



Bronze Cap P x F - Model 0656

Stock Code	Size	L (in)	L (mm)
	1		
16313	1/2"	0.917	23.3
16318	3/4"	1.067	27.1
16323	1"	1.110	28.2
16328	1-1/4"	1.319	33.5
16333	1-1/2"	1.622	41.2
16338	2"	1.811	46



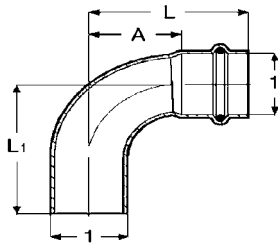
Copper Elbow 90° P x P Close Rough - Model 0616

Stock Code	Size	A (in)	A (mm)	L (in)	L (mm)
	1				
16128	1/2"	0.748	19	1.496	38
16133	3/4"	1.039	26.4	1.945	49.4
16138	1"	1.323	33.6	2.228	56.6
16143	1-1/4"	1.654	42	2.677	68
16148	1-1/2"	1.984	50.4	3.402	86.4
16153	2"	2.551	64.8	4.126	104.8

Viega... The global leader in plumbing and heating systems.

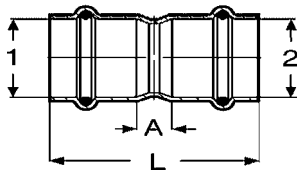
Dimensional Documentation

viega



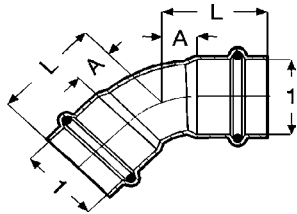
Copper Elbow 90° P x P Close Rough - Model 0616.1

Copper Elbow 90° FTG x P Close Rough							
Stock Code	Size	A (in)	A (mm)	L (in)	L (mm)	L1 (in)	L1 (mm)
	1						
16158	1/2"	0.748	19	1.496	38	1.535	39
16163	3/4"	1.039	26.4	1.945	49.4	1.984	50.4
16168	1"	1.323	33.6	2.228	56.6	2.268	57.6
16173	1-1/4"	1.654	42	2.677	68	2.756	70
16178	1-1/2"	1.984	50.4	3.402	86.4	3.480	88.4
16183	2"	2.551	64.8	4.126	104.8	4.205	206.8



Copper Coupling 90° P x P with Stop - Model 0615

Stock Code	Size	A (in)	A (mm)	L (in)	L (mm)
	1				
16098	1/2"	0.236	6	1.732	44
16103	3/4"	0.394	10	2.205	56
16108	1"	0.394	10	2.205	56
16113	1-1/4"	0.394	10	2.441	62
16118	1-1/2"	0.472	12	3.307	84
16123	2"	0.472	12	3.622	92



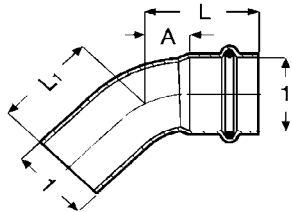
Copper Elbow 45° P x P - Model 0626

Stock Code	Size	A (in)	A (mm)	L (in)	L (mm)
	1				
16188	1/2"	0.295	7.5	1.043	26.5
16193	3/4"	0.433	11	1.339	34
16198	1"	0.551	14	1.457	37
16203	1-1/4"	0.685	17.4	1.709	43.4
16208	1-1/2"	0.823	20.9	2.240	56.9
16213	2"	1.059	26.9	2.634	66.9

Viega... The global leader in plumbing and heating systems.

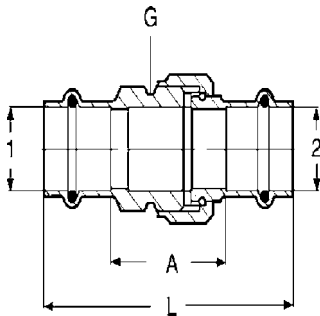
Dimensional Documentation

viega



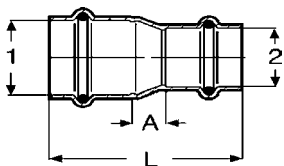
Copper Elbow 45° FTG x P - Model 0626.1

Stock Code	Size	A (in)	A (mm)	L (in)	L (mm)	L1 (in)	L1 (mm)
	1						
16118	1/2"	0.311	7.9	1.059	26.9	1.098	27.9
16223	3/4"	0.433	11	1.339	34	1.374	34.9
16228	1"	0.551	14	1.457	37	1.492	37.9
16233	1-1/4"	0.685	17.4	1.709	43.4	1.787	45.4
16238	1-1/2"	0.823	20.9	2.240	56.9	2.319	58.9
16243	2"	1.059	26.9	2.634	66.9	2.709	68.8



Bronze Union P x P - Model 0650

Stock Code	Size	A (in)	A (mm)	L (in)	L (mm)	G (in)
	1 2					
17598	1/2"	1.260	32	2.756	70	3/4"
17603	3/4"	1.335	33.9	3.146	79.9	1"
17608	1"	1.827	46.4	3.638	92.4	1-1/4"
17613	1-1/4"	1.634	41.5	3.681	93.5	1-1/2"
17618	1-1/2"	2.126	54	4.961	126	2"
17623	2"	2.067	52.5	5.217	132.5	2-1/2"



Copper Reducer P x P - Model 0615.2

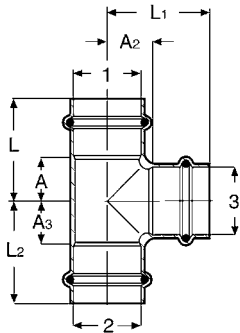
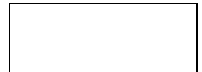
Stock Code	Size	A (in)	L (in)
	1 2		
23273	3/4" x 1/2"	0.445	2.071
23278	1" x 1/2"	0.736	2.362
23283	1" x 3/4"	0.504	2.287
23293	1-1/4" x 3/4"	0.728	2.638
23288	1-1/4" x 1"	0.614	2.524
23303	1-1/2" x 3/4"	0.994	3.327
23298	1-1/2" x 1"	0.768	3.071
23308	1-1/2" x 1-1/4"	0.528	2.959
23313	2" x 3/4"	1.524	4.016
15608	2" x 1"	1.319	3.780
22328	2" x 1-1/4"	0.827	3.425
78167	2" x 1-1/2"	0.846	3.827

Viega... The global leader in plumbing and heating systems.

301 N. Main, 9th Floor • Wichita, KS 67202 • Ph: 800-976-9819 • Fax: 800-976-9817 • E-Mail: insidesales@viega.com • www.viega.com

Dimensional Documentation

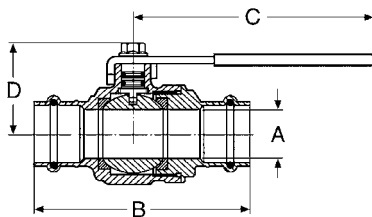
viega



Copper Tee P x P x P - Model 0618

Stock Code	Size			A (in)	A (mm)	A2 (in)	A2 (mm)	A3 (in)	A3 (mm)	L (in)	L (mm)	L1 (in)	L1 (mm)	L2 (in)	L2 (mm)
	1	2	3												
16248	1/2"			0.492	12.5	0.059	12.7	0.492	12.5	1.496	38	1.248	31.7	1.496	38
16253	3/4"			0.591	15	0.069	15	0.591	15	1.752	44.5	1.496	38	1.752	44.5
16258	3/4" x 3/4" x 1/2"			0.433	11	0.063	16	0.433	11	1.594	40.5	1.378	35	1.594	40.5
16263	1"			0.709	18	0.074	20	0.709	18	1.870	47.5	1.693	43	1.870	47.5
23333	1" x 3/4" x 1/2"			0.685	17.4	0.787	20	0.885	22.5	1.594	40.5	1.535	39	1.791	45.5
17688	1" x 1" x 1/2"			0.433	11	0.787	20	0.433	11	1.594	40.5	1.535	39	1.594	40.5
16268	1" x 3/4" x 3/4"			0.591	15	0.069	19	1.043	26.5	1.752	44.5	1.654	42	1.949	49.5
16273	1" x 1" x 3/4"			0.591	15	0.069	19	0.591	15	1.752	44.5	1.654	42	1.752	44.5
16278	1-1/4"			1.024	26	0.081	22	1.024	26	2.047	52	1.890	48	2.047	52
16283	1-1/4" x 1-1/4" x 1"			0.886	22.5	0.075	23	0.886	22.5	1.909	48.5	1.811	46	1.909	48.5
16288	1-1/2"			1.142	29	0.101	29	1.142	29	2.559	65	2.559	65	2.559	65
23348	1/2" x 1-1/2" x 3/4"			0.669	17	1.141	29	0.669	17	2.086	53	2.086	52	2.086	53
16293	1-1/2" x 1-1/2" x 1"			0.748	19	0.085	30	0.748	19	2.165	55	2.087	53	2.165	55
16298	1-1/2" x 1-1/2" x 1-1/4"			0.866	22	0.090	29	0.866	22	2.283	58	2.165	55	2.283	58
16303	2"			1.378	35	0.116	35	1.378	35	2.953	75	2.953	75	2.953	75
23353	2" x 2" x 3/4"			0.799	20.3	1.259	32	0.799	20.3	2.374	60.3	2.165	55	2.374	60.3
16308	2" x 2" x 1-1/2"			1.142	29	0.107	35	1.142	29	2.717	69	2.795	71	2.717	69

ProPress Gas Ball Valve (SC) - Model 0670



Stock Code	Size	A (in)	A (mm)	B (in)	B (mm)	C (in)	C (mm)	D (in)	D (mm)
19648	1/2"	0.55	14	3.70	94	4.76	121	1.54	39.2
19653	3/4"	0.79	20	4.06	103	4.76	121	1.61	41
19658	1"	0.98	25	4.35	110.5	4.76	121	1.76	44.7
19663	1-1/4"	1.12	28.5	4.49	114	6.10	155	2.18	55.3
19668	1-1/2"	1.50	38	5.53	140.5	6.10	155	2.47	62.8
19673	2"	1.85	47	6.46	164	6.10	155	2.72	69.2

Viega... The global leader in plumbing and heating systems.

301 N. Main, 9th Floor • Wichita, KS 67202 • Ph: 800-976-9819 • Fax: 800-976-9817 • E-Mail: insidesales@viega.com • www.viega.com