



# TechData

## PRODUCT SPECIFICATION SHEET



**ProRadiant**  
SYSTEMS

### HX Series Heat Exchangers

#### Specifications

Plate Material: 316L Stainless Steel  
 Braze Material: Copper  
 Max. Working Temp: 350°F  
 Min. Working Temp: -425°F  
 Max. Working Pressure: 450 psi  
 UL Listed

For use in radiant heating, snowmelting, and domestic hot water systems. For pool, spa, and steam applications use MHX Series marine grade exchangers.

Heat exchanger may be installed in vertical or horizontal position (except steam exchangers).

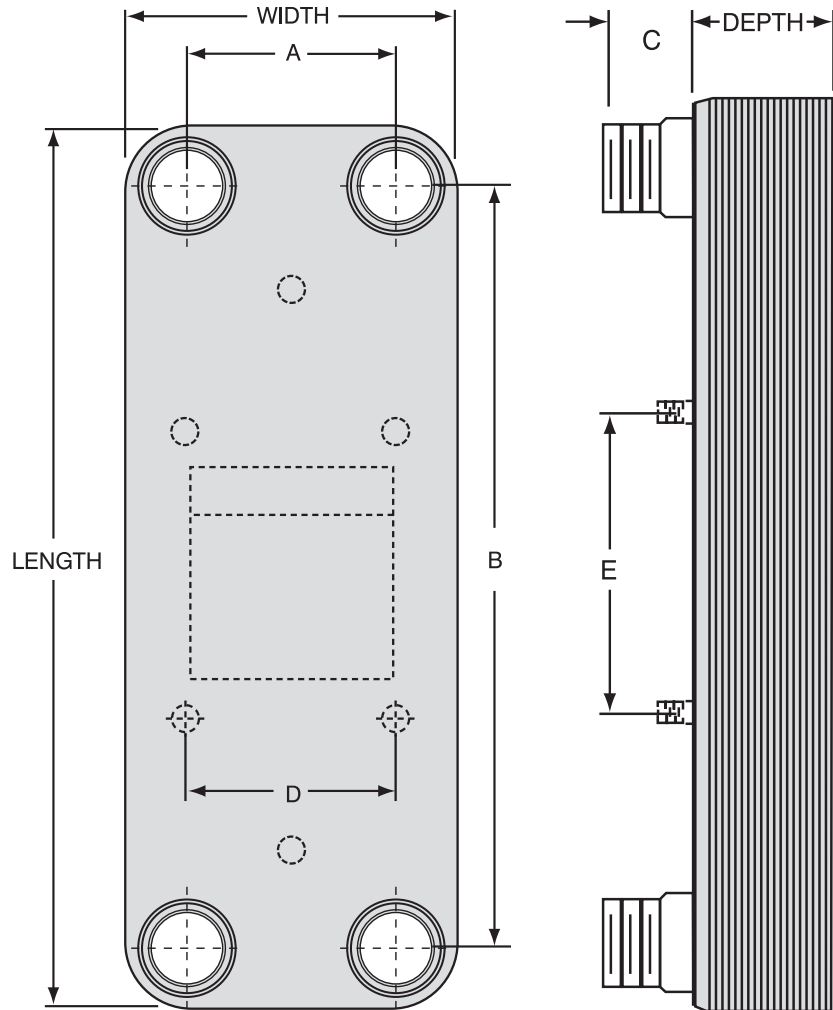
Heat exchanger must be piped in counterflow arrangement.

A water strainer **MUST** be installed in the water inlet circuit (16-20 mesh minimum, 20-40 mesh recommended).

Water quality should be maintained at a pH of 7.4 (6.5 to 8.0).

Mounting bolts:  
 3/8-24 x 1" L on standard HX Series  
 1/2-20 x 1-1/2" L on HX10 Series

Contact Viega NA for larger sizes.



Connections		C
# of Plates	Standard Threaded (MPT)	
<b>HX Series</b>		
4 through 16	3/4"	1.125
20 through 36	1"	1.250
40 through 80	1-1/4"	1.375
<b>HX10 Series</b>		
20 through 40	1-1/2"	1.500
50 through 80	2"	1.750
90 through 200	2-1/2"	2.000

Model	Dimension (inches)							Approximate Weight (lbs.)
	L	W	Depth	A	B	D	E	
<b>HX &amp; HXL Series</b>	12.2	4.9	.09 x # of Plates + .36	2.7	9.9	2.5	3.5	.328 x # of Plates + 3.1
<b>HX10 Series</b>	20.3	9.8	.09 x # of Plates + .36	6.5	17.0	4.0	5.5	1.1 x # of Plates + 10.7



**VIEGA**  
 301 N. Main, Floor 9  
 Wichita, KS 67202  
 Phone: 1-877-VIEGA-NA  
 Fax: 1-800-976-9817

service@viega.com  
 www.viega-na.com