

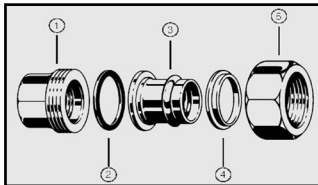
# Product Instructions

viEGA

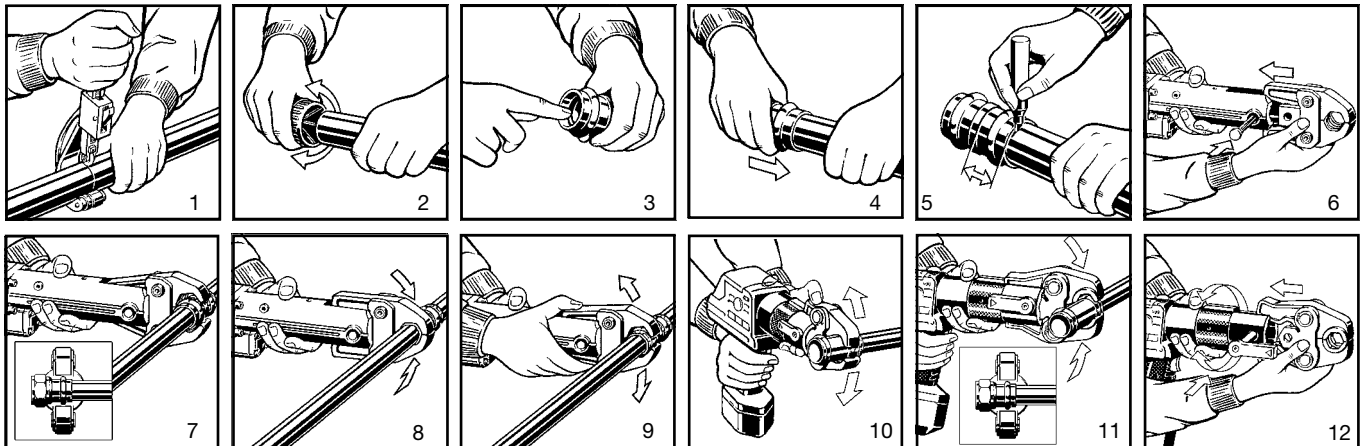
## Di-Electric Union

For Types K, L, and M Hard Copper Tubing in 1/2" to 2" and Soft Copper Tubing in 1/2" to 1-1/4".

**⚠ WARNING** Read and understand all instructions before installing ProPress fittings. Failure to follow all instructions may result in extensive property damage, serious injury, or death.



- ① Galvanized metal Female NPT threaded connection.
- ② EPDM gasket.
- ③ Bronze ProPress connection.
- ④ Electrical conductivity separation ring.
- ⑤ Galvanized nut.



ProPress Insertion Depth Chart

Tube Size	1/2"	3/4"	1"	1-1/4"	1-1/2"	2"
Insertion Depth	3/4"	7/8"	7/8"	1"	1-7/16"	1-9/16"

1. Cut copper tubing at right angles (using displacement type cutter or fine-toothed steel saw).
2. Deburr tubing on inside and outside to prevent cutting fitting seal.
3. Check seal for correct fit. Do not use oils or lubricants. Use only ProPress **Shiny Black** EPDM sealing elements.
4. With the union assembled, turn slightly and slide press fitting onto tubing to the fitting stop. **Note: end of tubing must contact stop**
5. Mark insertion depth. (See Insertion Depth Chart for proper depth)
6. Insert the appropriate jaw into the pressing tool and push in holding pin until it locks into place.
7. Open the jaw and place at right angles on the fitting. Visually check insertion depth using mark on tubing.
8. Start pressing process and hold the trigger until the jaw has engaged the fitting.
9. After pressing, the jaw can be opened again.
10. Battery-powered tool: Insert the appropriate jaw into the tool and secure with the holding pin. Rotate tool head into desired position.
11. Open the jaw and place on the press fitting at right angles. Check insertion depth, start pressing process and hold the trigger until the jaw has engaged the fitting.
12. On completion of the pressing process, the jaw can be opened again.
13. Thread female NPT connection onto threaded pipe or fitting using appropriate thread sealant.



**Pressure Testing:** Pressure testing is to be carried out in accordance with local codes. ProPress also includes the **Smart Connect Feature** providing quick and easy identification of **un**pressed connections during the pressure testing process. Unpressed connections are located by pressurizing the system with a **maximum pressure range of 1/2 - 85 PSI for gases and 15 - 85 psi for liquid**. The SC Feature is a special indentation in 1/2" to 2" dimensions located on the inside surface of the fitting near the sealing element. This indentation assures leakage of liquids and/or gases from inside the system past the sealing element of an **un**pressed connection. The indentation is removed during the pressing process creating a leak-proof, permanent connection.

**ViEga... The global leader in plumbing, heating and pipe joining systems**

301 N. Main, 9th Floor • Wichita, KS 67202 • Ph: 800-976-9819 • Fax: 316-425-7618 • www.viega.com

©2011, ProPress®, FostaPEX®, Seapress®, MegaPress®, MegaPressG® and Viega® are registered trademarks of Viega GmbH & Co. PureFlow®, Smart Connect®, Climate Panel®, Climate Mat®, Climate Trak®, MANABLOC®, Radiant Wizard®, S-no-Ice®, Snap Panel®, XL® and XL-C® are registered trademarks of Viega LLC. MiniBloc®, ProRadiant®, PolyAlloy®, SmartLoop® and Zero Lead® are trademarks of Viega LLC; GeoFusion®, ProPressG® and ViegaPEX® are trademarks of Viega GmbH & Co. KG.

PI-PP-514832 0212 (Di-electric Union)