

Product Instructions

viega

Multi-Run Climate Panel System

Viega's new addition to the Climate Panel System is designed to provide installers with a solution for every type of installation. There are three main installations for which the Multi-Run Climate Panel System is designed.

1. Floating ACPs Over Concrete

Assembled Climate Panels are placed on concrete and the joints are taped. A floating finished floor is installed directly on top of the ACPs as per manufacturer's instructions. A thin pad should be placed in between the concrete and the ACPs.

2. Climate Panels On Plywood Over Concrete

3/4" plywood is fastened down to the concrete with the climate panel system stapled or screwed directly to the plywood. This system works well in this situation because the installer does not have the option to drop the supply and return lines below the subfloor.

3. No Drop Option

Situations where the installer does not have the option to drop below the subfloor. i.e. installations where the floor level below has finished ceilings.

Benefits include:

- Minimizes Labor
- Minimizes Planning
- No Drilling
- Minimizes chance of kinking at floor penetrations
- Allows for more supply and return lines to be easily brought to a manifold in a wall or cabinet



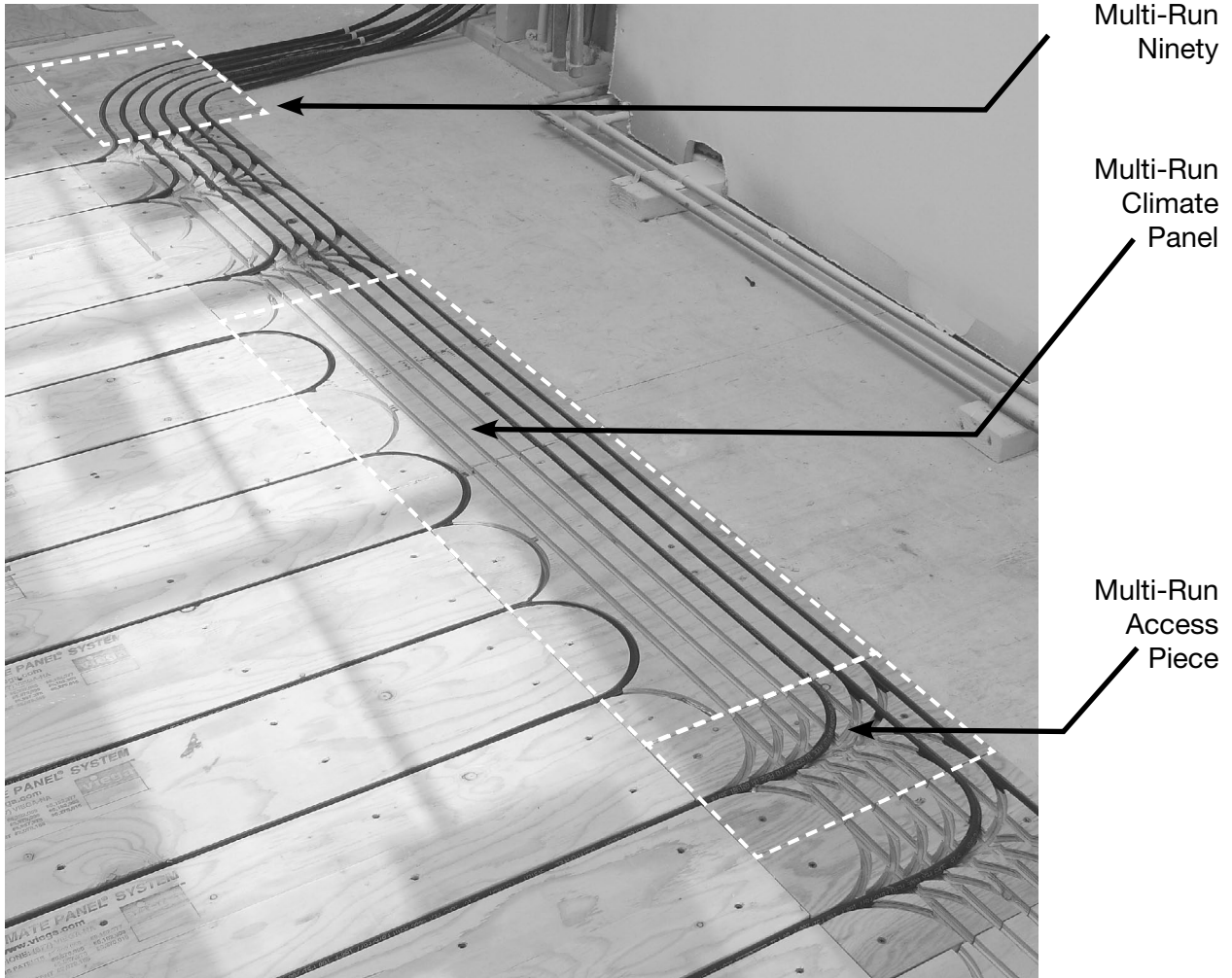
Viega... The global leader in plumbing, heating and pipe joining systems

301 N. Main, 9th Floor • Wichita, KS 67202 • Ph: 800-976-9819 • Fax: 316-425-7618 • www.viega.com

©2011, ProPress®, FostaPEX®, Seapress®, MegaPress®, MegaPressG® and Viega® are registered trademarks of Viega GmbH & Co. PureFlow®, Smart Connect®, Climate Panel®, Climate Mat®, Climate Trak®, MANABLOC®, Radiant Wizard®, S-no-Ice®, Snap Panel®, XL® and XL-C® are registered trademarks of Viega LLC. MiniBloc™, ProRadiant™, PolyAlloy™, SmartLoop™ and Zero Lead™ are trademarks of Viega LLC; GeoFusion™, ProPressG™ and ViegaPEX™ are trademarks of Viega GmbH & Co. KG.

Product Instructions

viega



Stock Code	Product Description	Package Quantity
14050	Multi-Run Climate Panel - 7" Spacing	5
14055	Multi-Run Access Piece	6
14060	Multi-Run Ninety	5
14065	Multi-Run Climate Panel Set	5 Panels & 6 Access Pieces

A Multi-Run Climate Panel Set consists of five Multi-Run Climate Panels and six Multi-Run Access Pieces. This set is designed to supply a room that is approximately 350 sq. ft., or three circuits (these circuits are based on 250 ft. lengths of 5/16" tubing with 15 ft. supply and return leaders included). The set does not include Multi-Run Nineties or regular Climate Panels and U-Turn Strips.

Viega... The global leader in plumbing, heating and pipe joining systems

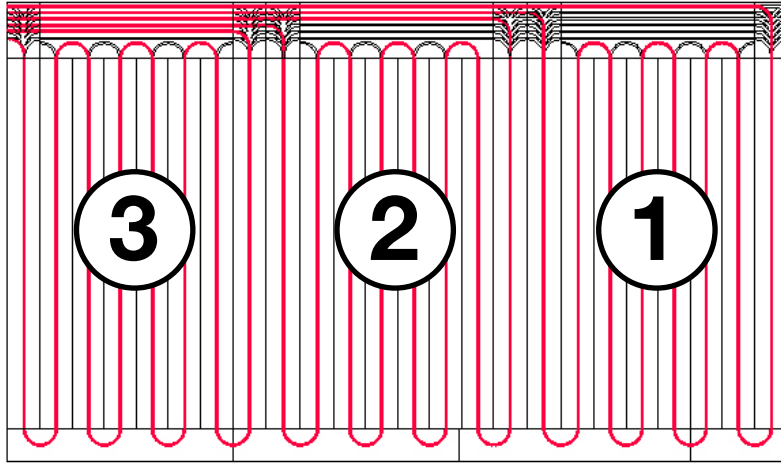
301 N. Main, 9th Floor • Wichita, KS 67202 • Ph: 800-976-9819 • Fax: 316-425-7618 • www.viega.com

©2011, ProPress®, FostaPEX®, Seapress®, MegaPress®, MegaPressG® and Viega® are registered trademarks of Viega GmbH & Co. PureFlow®, Smart Connect®, Climate Panel®, Climate Mat®, Climate Trak®, MANABLOC®, Radiant Wizard®, S-no-Ice®, Snap Panel®, XL® and XL-C® are registered trademarks of Viega LLC. MiniBloc™, ProRadiant™, PolyAlloy™, SmartLoop™ and Zero Lead™ are trademarks of Viega LLC; GeoFusion™, ProPressG™ and ViegaPEX™ are trademarks of Viega GmbH & Co. KG.

Product Instructions

viiega

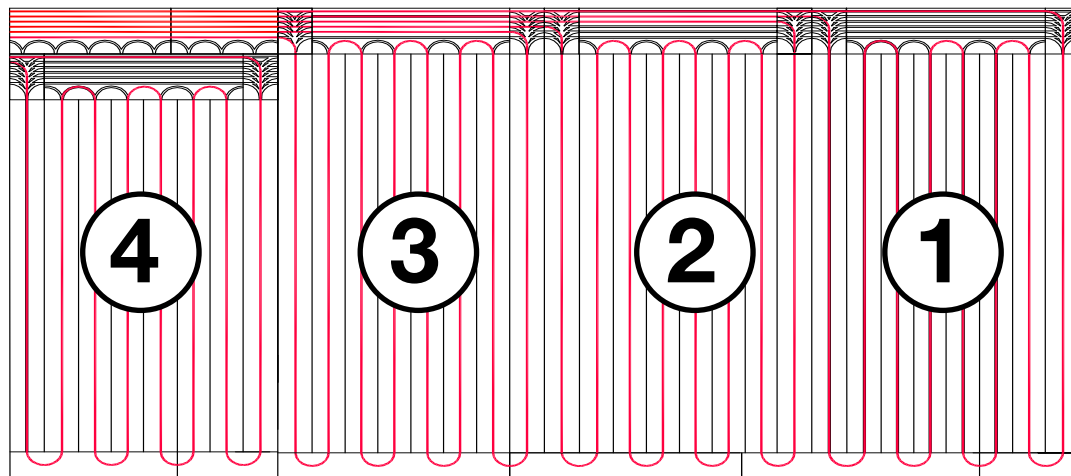
Single Room Installation: One Multi-Run Climate Panel Set



The figure below shows how a 350 sq. ft. room would utilize the Multi-Run Climate Panel system. The supply and return of each circuit are via the Multi-Run Climate Panel. From the Multi-Run Climate Panel, the tubing enters and exits each circuit via a Multi-Run Access Piece.

Note: ACPs and U-Turn panels are needed to complete the installation and are sold separately.

Single Room Four Circuit Installation: Two Multi-Run Climate Panel Sets



1. Begin installing the Multi-Run Climate Panel System from the outside in.
2. Continue to lay out the Panels.
3. Once all of the Panels have been installed, install the tubing, starting with circuit one.

Viiega... The global leader in plumbing, heating and pipe joining systems

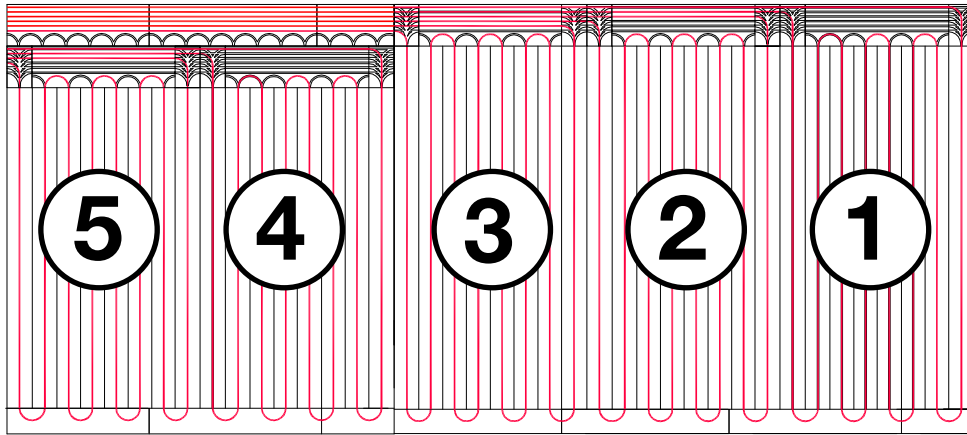
301 N. Main, 9th Floor • Wichita, KS 67202 • Ph: 800-976-9819 • Fax: 316-425-7618 • www.viiega.com

©2011, ProPress®, FostaPEX®, Seapress®, MegaPress®, MegaPressG® and Viiega® are registered trademarks of Viiega GmbH & Co. PureFlow®, Smart Connect®, Climate Panel®, Climate Mat®, Climate Trak®, MANABLOC®, Radiant Wizard®, S-no-Ice®, Snap Panel®, XL® and XL-C® are registered trademarks of Viiega LLC. MiniBloc™, ProRadiant™, PolyAlloy™, SmartLoop™ and Zero Lead™ are trademarks of Viiega LLC; GeoFusion™, ProPressG™ and ViiegaPEX® are trademarks of Viiega GmbH & Co. KG.

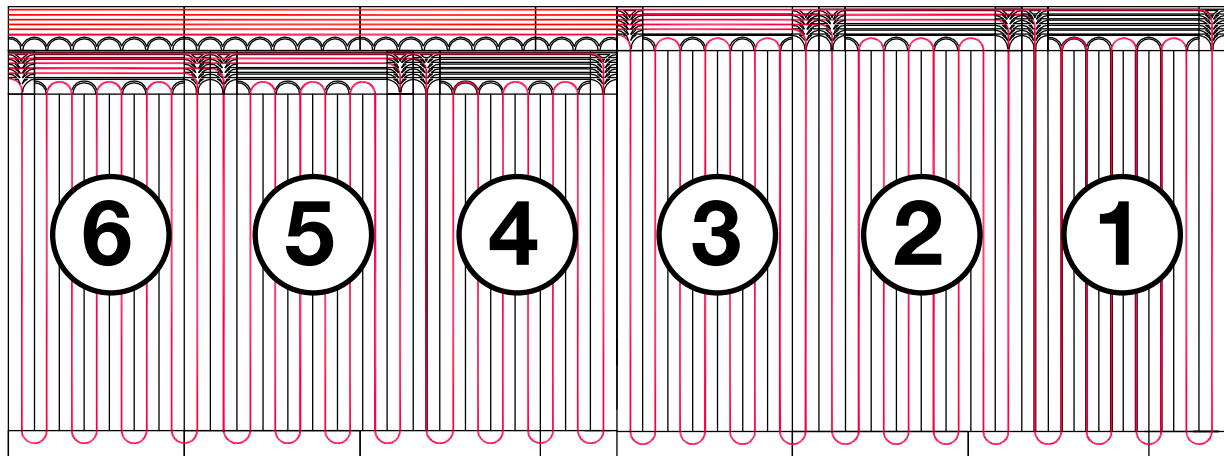
Product Instructions

viega

Single Room Five Circuit Installation: Two Multi-Run Climate Panel Sets



Single Room Six Circuit Installation: Two Multi-Run Climate Panel Sets



Viega... The global leader in plumbing, heating and pipe joining systems

301 N. Main, 9th Floor • Wichita, KS 67202 • Ph: 800-976-9819 • Fax: 316-425-7618 • www.viega.com

©2011, ProPress®, FostaPEX®, Seapress®, MegaPress®, MegaPressG® and Viega® are registered trademarks of Viega GmbH & Co. PureFlow®, Smart Connect®, Climate Panel®, Climate Mat®, Climate Trak®, MANABLOC®, Radiant Wizard®, S-no-Ice®, Snap Panel®, XL® and XL-C® are registered trademarks of Viega LLC. MiniBloc™, ProRadiant™, PolyAlloy™, SmartLoop™ and Zero Lead™ are trademarks of Viega LLC; GeoFusion™, ProPressG™ and ViegaPEX™ are trademarks of Viega GmbH & Co. KG.