

# ProPress® BALL VALVE SYSTEM

## w/ Smart Connect Feature™

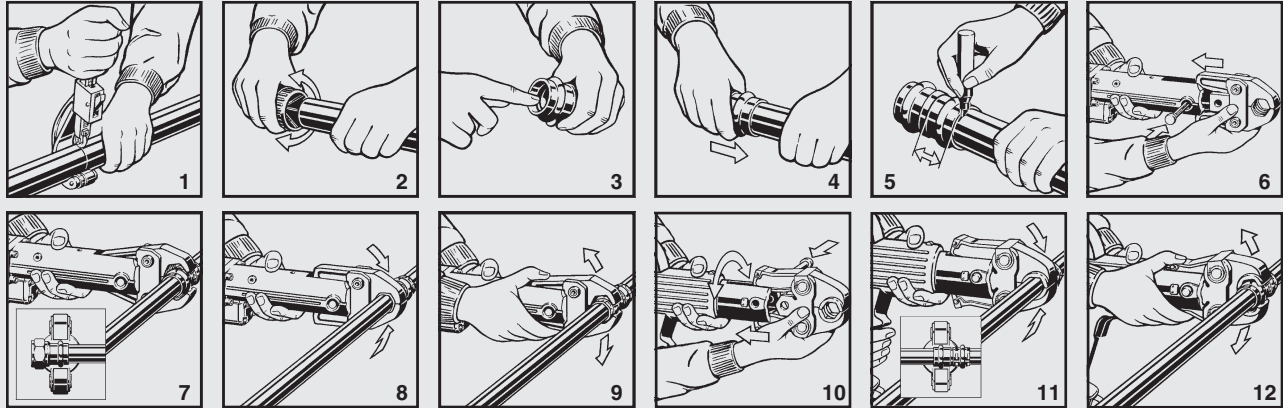


## Product Instructions

For Types K, L, and M Hard Copper Tubing in 1/2" to 2" and Soft Copper Tubing in 1/2" to 1-1/4".

### ⚠ WARNING

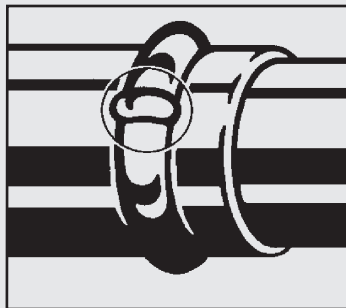
Read and understand all instructions for installing ProPress fittings. Failure to follow all instructions may result in extensive property damage, serious injury or death.



ProPress XL-C Insertion Depth Chart

Tube Size	1/2"	3/4"	1"	1-1/4"	1-1/2"	2"
Insertion Depth	3/4"	7/8"	7/8"	1"	1-7/16"	1-9/16"

1. Cut copper tubing at right angles (using displacement type cutter or fine-toothed steel saw).
2. Deburr tubing on inside and outside.
3. Check seal for correct fit. Do not use oils or lubricants.
4. While turning slightly, slide press fitting onto tubing to the fitting stop. **Note: End of tubing must stop.**
5. Mark insertion depth.
6. Insert the appropriate jaw into the pressing tool and push in holding pin until it locks into place.
7. Open the jaw and place at right angles on the fitting. Visually check insertion depth using mark on tubing.
8. Start pressing process and hold the trigger until the jaw has engaged the fitting.
9. After pressing, the jaw can be opened again.
10. Battery-powered tool: Insert the appropriate jaw into the tool and secure with the holding pin. Rotate tool head into desired position.
11. Open the jaw and place on the press fitting at right angles. Check insertion depth, start pressing process and hold the trigger until the jaw has engaged the fitting.
12. On completion of the pressing process, the jaw can be opened again.



### Pressure Testing

Pressure testing is to be carried out in accordance with local codes. The **Smart Connect™ Feature** provides quick and easy identification of **unpressed** connections during the pressure testing process. Unpressed connections are located by pressurizing the system with a **maximum pressure range of 1/2-85 psi for gases and 15-85 psi for liquids**. The SC Feature is a special indentation in 1/2" to 2" dimensions located on the inside surface of them fitting near the sealing element. This indentation assures leakage of liquids and/or gases from inside the system past the sealing element of an **unpressed** connection. The indentation is removed during the pressing process, creating a leak-free, permanent connection.

VIEGA • One Company... One Partner... Delivering System Solutions.

301 N. Main, Floor 9 • Wichita, KS 67202 • Ph: 877-Viega-NA • Fax: 316-425-7618 • E-Mail: service@viega.com • www.viega-na.com