



Submittal Package

PEX Crimp Fittings For Use With Viega PureFlow Tubing

Project:

Engineer:

Contractor:

Submitted By:



Potable Water

Other _____

VIEGA...The global leader in plumbing and heating systems.

301 N. Main, Floor 9 • Wichita, KS 67202 • Ph: 877-843-4262 • Fax: 316-425-7618 • E-Mail: service@viega.com • www.viega-na.com
SP-PFPC-0908

Submittal Package

PEX Crimp Fittings For Use With Viega PureFlow Tubing

Technical Data

Materials:

Fittings.....	Brass or Polymer
Crimp Rings.....	Copper (black)
MANABLOC [®] Manifolds.....	Polysulfone (plastic) with Brass or PolyAlloy [™] fittings
PEX Crimp Copper Manifolds.....	Copper with Brass alloy fittings
PEX Crimp Poly Manifolds.....	PolyAlloy crimp connections
Valves.....	Brass and PolyAlloy
ViegaPEX [™] , ViegaPEX Ultra Tubing.....	PEX (crosslinked polyethylene)

Applications

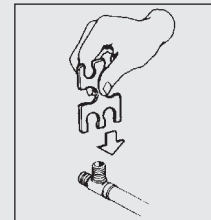
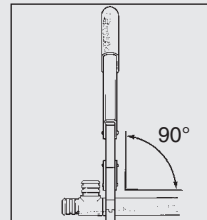
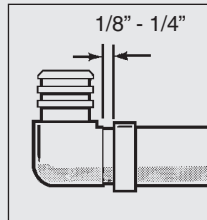
Brass and Polyalloy fittings are intended for use in potable water systems. They can be directly buried in soil but shall be wrapped (fittings used in concrete shall also be wrapped). Fittings are manufactured with PureFlow PEX Crimp barsbs for use with ViegaPEX, ViegaPEX Ultra tubing, crimp rings and tools.

Installation

- Use only ASTM F1807 crimp rings and approved full circle crimp tools to make connections.
- Keep flame and excessive heat away from tubing and connections.
- Refer to the PureFlow Installation Manual for additional information.

Codes Approvals & Standards

cNSF[®] us-pw
 U.P. Code
 UPC[®]
 ASTM F876 / F877
 ASTM F1807 / F2159
 ICBO ES ER 5287
 ESR 1837



THREE SIMPLE STEPS TO A SECURE PEX CRIMP PUREFLOW FITTING CONNECTION.

- 1 SLIDE CRIMP RING OVER END OF SQUARED OFF TUBING, FULLY INSERT FITTING INTO TUBING AND POSITION THE RING 1/8" TO 1/4" FROM THE END OF TUBING.
- 2 KEEP THE TOOL AT 90° AND CLOSE THE HANDLES COMPLETELY. DO NOT CRIMP TWICE.
- 3 CHECK CRIMP WITH GO/ NO GO GAUGE.

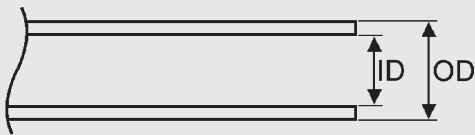
VIEGA...The global leader in plumbing and heating systems.

Dimensional Documentation

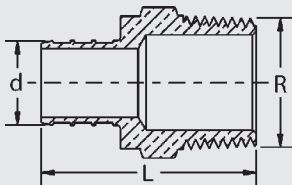
PEX Crimp Fittings

ViegaPEX and ViegaPEX UltraTubing

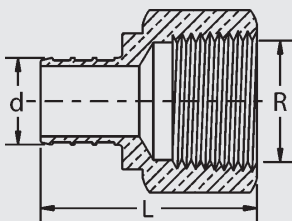
Material.....PEX crosslinked polyethylene
 Temperature/Pressure Ratings... 200°F at 80 psi
 180°F at 100 psi
 73.4°F at 160 psi
 Linear Expansion Rate.....1.1 in./100 ft./10°F



Nominal Size	Inner Diameter	Outer Diameter	Wall Thickness
3/8"	0.35	0.500±.003	0.070±.010
1/2"	0.47	0.625±.004	0.070±.010
3/4"	0.67	0.875±.004	0.097±.010
1"	0.86	1.125±.005	0.125±.013
1-1/4"	1.05	1.375±.005	0.153±.015
1-1/2"	1.24	1.625±.006	0.181±.019



Brass PEX Crimp X Male NPT Adapters			
Stock Code	d x R (size)	L (in)	L (mm)
48302	3/8" PEX Crimp x 1/2" M NPT	1.63	41.4
48321	1/2" PEX Crimp x 1/2" M NPT	1.65	41.9
48324	1/2" PEX Crimp x 3/4" M NPT	1.84	46.7
48342	3/4" PEX Crimp x 1/2" M NPT	1.65	41.9
48340	3/4" PEX Crimp x 3/4" M NPT	1.84	46.7
48346	3/4" PEX Crimp x 1" M NPT	2.07	2.07
48361	1" PEX Crimp x 3/4" M NPT	2.07	2.02
48366	1" PEX Crimp x 1" M NPT	2.25	57.2

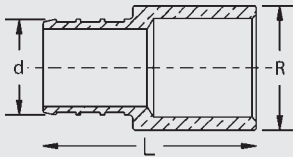


Brass PEX Crimp X Female NPT Adapters			
Stock Code	d x R (size)	L (in)	L (mm)
48323	3/8" PEX Crimp x 1/2" F NPT	1.62	41.1
48333	1/2" PEX Crimp x 1/2" F NPT	1.62	41.1
48334	1/2" PEX Crimp x 3/4" F NPT	1.67	42.4
48344	3/4" PEX Crimp x 3/4" F NPT	1.67	42.4
48345	3/4" PEX Crimp x 1" F NPT	1.89	48.0
48355	1" PEX Crimp x 1" F NPT	2.07	52.6

VIEGA ...The global leader in plumbing and heating systems.

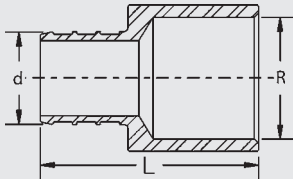
Dimensional Documentation

PEX Crimp Fittings



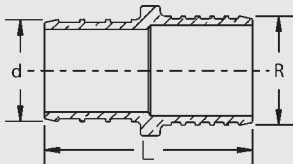
Brass PEX Crimp Male Sweat Fitting Adapters			
Stock Code	d x R (size)	L (in)	L (mm)
40621	3/8" PEX Crimp x 3/8" M Sweat or 1/4" F	1.33	33.8
40622	3/8" PEX Crimp x 1/2" M Sweat or 3/8" F	1.33	33.8
40631	1/2" PEX Crimp x 3/8" M Sweat or 1/4" F	1.46	37.1
40633	1/2" PEX Crimp x 1/2" M Sweat	1.33	33.8
40644	3/4" PEX Crimp x 3/4" M Sweat	1.50	38.1
40654	1" PEX Crimp x 1" M Sweat or 3/4" F	1.92	48.8

Copper PEX Crimp Male Sweat Fitting Adapter			
Stock Code	d x R (size)	L (in)	L (mm)
60651	1" PEX Crimp x 1" M Sweat	1.97	50.0

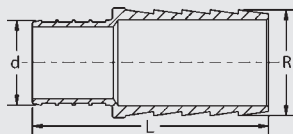


Brass PEX Crimp X Female Sweat Fitting Adapters			
Stock Code	d x R (size)	L (in)	L (mm)
40635	1/2" PEX Crimp x 1/2" F Sweat	1.33	33.8
40645	3/4" PEX Crimp x 3/4" F Sweat	1.57	39.9

Copper PEX Crimp X Female Sweat Fitting Adapters			
Stock Code	d x R (size)	L (in)	L (mm)
40655	1" PEX Crimp x 1" F Sweat	2.13	54.1



Brass PEX Crimp PB Adapters			
Stock Code	d x R (size)	L (Inches)	L (mm)
48622	3/8" PEX Crimp x 3/8" PB	1.37	34.8
48633	1/2" PEX Crimp x 1/2" PB	1.37	34.8
48644	3/4" PEX Crimp x 3/4" PB	1.37	34.8
48655	1" PEX Crimp x 1" PB	1.73	43.9



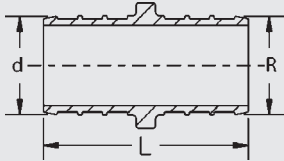
Brass PEX Crimp PE Adapters			
Stock Code	d x R (size)	L (Inches)	L (mm)
48645	3/4" PEX Crimp x 3/4" PE	1.94	49.3
48656	1" PEX Crimp x 1" PE	2.39	60.7

VIEGA ...The global leader in plumbing and heating systems.

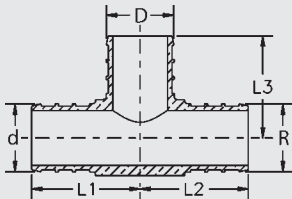
301 N. Main, Floor 9 • Wichita, KS 67202 • Ph: 877-843-4262 • Fax: 316-425-7618 • E-Mail: service@viega.com • www.viega-na.com
SP-PFPC-0908

Dimensional Documentation

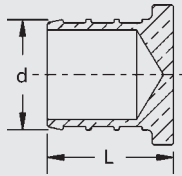
PEX Crimp Fittings



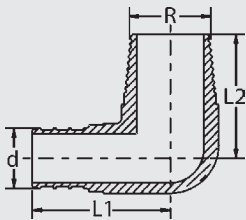
Brass PEX Crimp Couplings			
Stock Code	d x R (size)	L (Inches)	L (mm)
40422	3/8" x 3/8" PEX Crimp	1.39	35.3
40432	1/2" x 3/8" PEX Crimp	1.39	35.3
40433	1/2" X 1/2" PEX Crimp	1.39	35.3
40443	3/4" X 1/2" PEX Crimp	1.39	35.3
40444	3/4" X 3/4" PEX Crimp	1.39	35.3
40454	1" X 3/4" PEX Crimp	1.57	39.9
40455	1" X 1" PEX Crimp	1.75	44.5



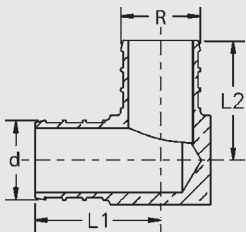
Brass PEX Crimp Tees							
Stock Code	d x R x D (size)	L1 (in)	L1 (mm)	L2 (in)	L2 (mm)	L3 (in)	L3 (mm)
40500	3/8" x 3/8" x 3/8" PEX Crimp	0.89	22.7	0.89	22.7	0.88	22.4
40520	1/2" x 1/2" x 1/2" PEX Crimp	0.95	24.1	0.95	24.1	0.88	22.4
40540	3/4" x 3/4" x 3/4" PEX Crimp	1.07	27.2	1.07	27.2	1.00	25.5
40560	1" x 1" x 1" PEX Crimp	1.38	35.2	1.38	35.2	1.28	32.5



Brass PEX Crimp Test Plugs			
Stock Code	d (size)	L (Inches)	L (mm)
40702	3/8" PEX Crimp	0.76	19.3
40723	1/2" PEX Crimp	0.76	19.3
40744	3/4" PEX Crimp	0.76	19.3
40765	1" PEX Crimp	0.94	23.9



Brass PEX Crimp X Male NPT Elbows					
Stock Code	d x R (size)	L1 (in)	L1 (mm)	L2 (in)	L2 (mm)
40222	3/8" PEX Crimp x 3/8" M NPT	1.03	26.2	0.96	24.4
40232	1/2" PEX Crimp x 3/8" M NPT	1.03	26.2	0.96	24.4
40221	1/2" PEX Crimp x 1/2" M NPT	1.11	28.2	1.19	30.2
40223	3/4" PEX Crimp x 3/4" M NPT	1.54	39.1	1.38	35.1



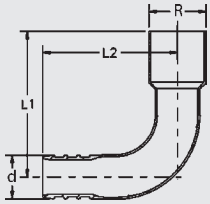
Brass PEX Crimp Elbows					
Stock Code	d x R (size)	L1 (in)	L1 (mm)	L2 (in)	L2 (mm)
48222	3/8" x 3/8" PEX Crimp	0.89	22.7	0.87	22.2
48233	1/2" x 1/2" PEX Crimp	0.95	24.1	0.87	22.2
48243	3/4" x 1/2" PEX Crimp	1.07	27.3	1.00	25.5
48244	3/4" x 3/4" PEX Crimp	1.06	26.9	1.00	25.5
48255	1" x 1" PEX Crimp	1.38	35.1	1.28	32.5

VIEGA ...The global leader in plumbing and heating systems.

301 N. Main, Floor 9 • Wichita, KS 67202 • Ph: 877-843-4262 • Fax: 316-425-7618 • E-Mail: service@viega.com • www.viega-na.com
 SP-PFPC-0908

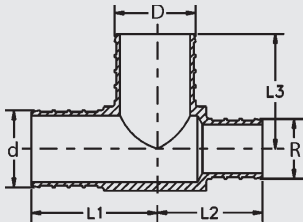
Dimensional Documentation

PEX Crimp Fittings

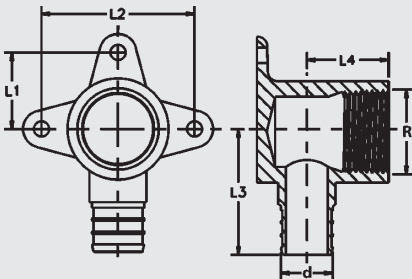


Copper PEX Crimp Adapters Male Sweat					
Stock Code	d x R (size)	L1 (in)	L1 (mm)	L2 (in)	L2 (mm)
44302	3/8" PEX Crimp x 1/2" M Copper	1.65	41.9	1.56	39.6
44320	1/2" PEX Crimp x 1/2" M Copper	1.44	36.6	1.49	37.8
44340	3/4" PEX Crimp x 3/4" M Copper	1.94	49.3	1.87	47.5

Copper PEX Crimp Adapters Female Sweat					
Stock Code	d x R (size)	L1 (in)	L1 (mm)	L2 (in)	L2 (mm)
44305	3/8" PEX Crimp x 1/2" F Copper	1.68	42.7	1.46	37.1
44325	1/2" PEX Crimp x 1/2" F Copper	1.43	36.3	1.58	40.1
44345	3/4" PEX Crimp x 3/4" F Copper	2.05	52.1	2.01	51.1



Brass PEX Crimp Reducing Tees							
Stock Code	d x R x D (size)	L1 (in)	L1 (mm)	L2 (in)	L2 (mm)	L3 (in)	L3 (mm)
48524	1/2" x 1/2" x 3/4" PEX Crimp	1.20	30.6	1.20	30.6	1.10	27.9
48433	3/4" x 1/2" x 1/2" PEX Crimp	1.20	30.6	1.20	30.6	1.10	27.9
48434	3/4" x 1/2" x 3/4" PEX Crimp	1.20	30.6	1.20	30.6	1.10	27.9
48443	3/4" x 3/4" x 1/2" PEX Crimp	1.20	30.6	1.20	30.6	1.10	27.9
48445	3/4" x 3/4" x 1" PEX Crimp	1.20	30.6	1.20	30.6	1.28	32.5
48544	1" x 3/4" x 3/4" PEX Crimp	1.38	35.2	1.20	30.6	1.10	27.9
48545	1" x 3/4" x 1" PEX Crimp	1.38	35.2	1.20	30.6	1.28	32.5
48553	1" x 1" x 1/2" PEX Crimp	1.38	35.2	1.38	35.2	1.28	32.5
48554	1" x 1" x 3/4" PEX Crimp	1.38	35.2	1.38	35.2	1.10	27.9



Brass PEX Crimp Drop Ear Elbows					
Stock Code	d x R (size)	L1 (in)	L1 (mm)	L2 (in)	L2 (mm)
40233	1/2" PEX Crimp x 1/2" F NPT	0.79	20.1	1.58	40.1
40244	3/4" PEX Crimp x 3/4" F NPT	0.99	25.1	1.98	50.3

L3 (in)	L3 (mm)	L4 (in)	L4 (mm)
1.39	35.3	0.72	18.3
1.46	37.1	1.05	26.7

Copper PEX Crimp Drop Ear Elbows					
Stock Code	d x R (size)	L1 (in)	L1 (mm)	L2 (in)	L2 (mm)
40224	3/8" PEX Crimp x 1/2" F NPT	N/A	N/A	1.62	41.1
40343	3/4" PEX Crimp x 1/2" F NPT	N/A	N/A	1.53	38.9
40245	3/4" PEX Crimp x 3/4" F NPT	N/A	N/A	1.75	44.5

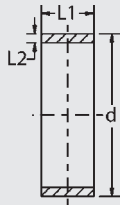
L3 (in)	L3 (mm)	L4 (in)	L4 (mm)
2.12	54.0	0.61	15.5
2.29	58.3	0.90	22.9
2.37	60.2	1.20	30.5

VIEGA ...The global leader in plumbing and heating systems.

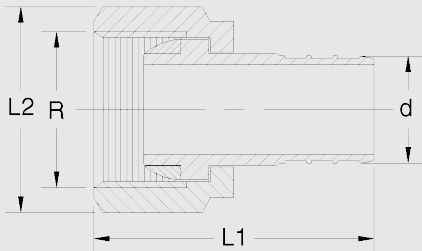
301 N. Main, Floor 9 • Wichita, KS 67202 • Ph: 877-843-4262 • Fax: 316-425-7618 • E-Mail: service@viega.com • www.viega-na.com
 SP-PFPC-0908

Dimensional Documentation

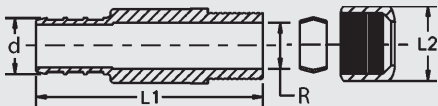
PEX Crimp Fittings



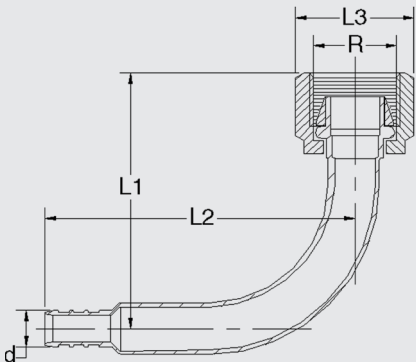
Copper PEX Crimp Rings					
Stock Code	d (size)	L1 (in)	L1 (mm)	L2 (in)	L2 (mm)
43600	3/8" SDR9	0.32	8.3	0.05	1.5
43620	1/2" SDR9	0.32	8.3	0.05	1.4
43640	3/4" SDR9	0.32	8.3	0.05	1.4
43660	1" SDR9	0.36	9.3	0.04	1.2



Brass PEX Crimp Lav Adapters					
Stock Code	d x R (size)	L1 (in)	L1 (mm)	L2 (in)	L2 (mm)
40323	3/8" PEX Crimp x 1/2" Lav (plastic nut)	1.65	41.9	1.12	28.5
40324	3/8" PEX Crimp x 1/2" Lav (brass nut)	1.65	41.9	0.87	22.2
40333	1/2" PEX Crimp x 1/2" Lav (plastic nut)	1.65	41.9	1.12	28.5
40334	1/2" PEX Crimp x 1/2" Lav (brass nut)	1.65	41.9	0.87	22.2
40344	3/4" PEX Crimp x 3/4" Lav (brass nut)	1.70	43.2	1.18	30.2



Brass PEX Crimp Lav Adapters Compression					
Stock Code	d x R (size)	L1 (in)	L1 (mm)	L2 (in)	L2 (mm)
40321	3/8" PEX Crimp x 1/4" CTS (3/8" OD) Comp	1.76	44.7	0.63	16.0
40331	1/2" PEX Crimp x 1/4" CTS (3/8" OD) Comp	1.76	44.7	0.63	16.0



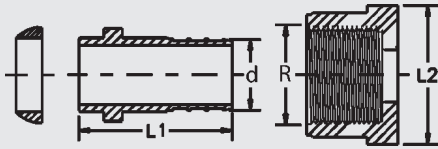
Copper PEX Crimp LAV Elbow							
Stock Code	d x R (size)	L1 (in)	L1 (mm)	L2 (in)	L2 (mm)	L3 (in)	L3 (mm)
44201	3/8" PEX Crimp x 1/2" Lav (plastic nut)	2.25	57.2	2.73	69.3	1.12	28.5

VIEGA ...The global leader in plumbing and heating systems.

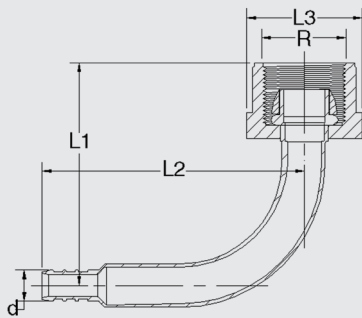
301 N. Main, Floor 9 • Wichita, KS 67202 • Ph: 877-843-4262 • Fax: 316-425-7618 • E-Mail: service@viega.com • www.viega-na.com
 SP-PFPC-0908

Dimensional Documentation

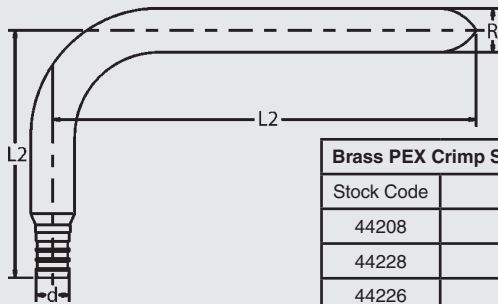
PEX Crimp Fittings



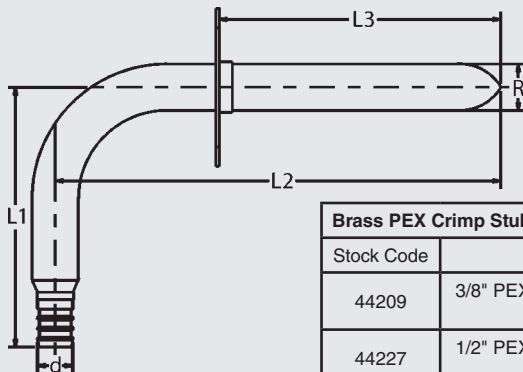
Brass PEX Crimp Closet Adapters					
Stock Code	d x R (size)	L1 (in)	L1 (mm)	L2 (in)	L2 (mm)
44223	3/8" PEX Crimp x 1/2" Closet (plastic nut)	1.36	34.7	1.16	29.5
44233	1/2" PEX Crimp x 1/2" Closet (plastic nut)	1.36	34.7	1.16	29.5



Copper PEX Crimp Closet Elbow							
Stock Code	d x R (size)	L1 (in)	L1 (mm)	L2 (in)	L2 (mm)	L3 (in)	L3 (mm)
44203	3/8" PEX Crimp x 1/2" Closet (plastic nut)	2.00	50.8	2.73	69.3	1.16	29.5



Brass PEX Crimp Stub-Out Elbows					
Stock Code	d x R (size)	L1 (in)	L1 (mm)	L2 (in)	L2 (mm)
44208	3/8" PEX Crimp x 1/2" Copper (3-1/2" x 8")	3.50	88.9	7.75	196.9
44228	1/2" PEX Crimp x 1/2" Copper (3-1/2" x 8")	3.50	88.9	7.75	196.9
44226	1/2" PEX Crimp x 1/2" Copper (3-1/2" x 6")	3.50	88.9	5.75	146.1
44240	1/2" PEX Crimp x 1/2" Copper (3-1/2" x 8")	4.50	114.3	8.00	203.2



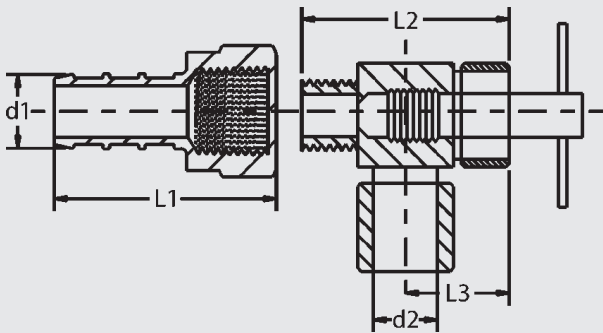
Brass PEX Crimp Stub-Out Elbows With Attachment Plate							
Stock Code	d x R (size)	L1 (in)	L1 (mm)	L2 (in)	L2 (mm)	L3 (in)	L3 (mm)
44209	3/8" PEX Crimp x 1/2" Copper (3-1/2" x 8")	3.50	88.9	7.75	196.9	6.00	152.4
44227	1/2" PEX Crimp x 1/2" Copper (3-1/2" x 6")	3.50	88.9	5.75	146.1	4.00	101.6
44229	1/2" PEX Crimp x 1/2" Copper (3-1/2" x 8")	3.50	88.9	7.75	196.9	6.00	152.4

VIEGA ...The global leader in plumbing and heating systems.

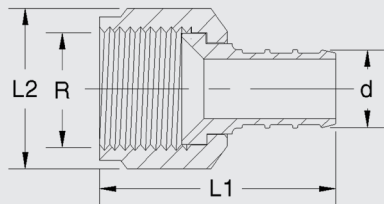
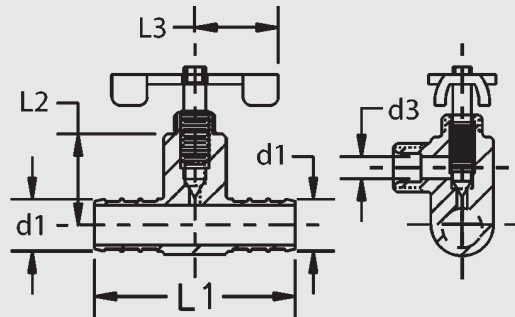
Dimensional Documentation

PEX Crimp Fittings

Brass Ice Maker Valve Kit Adapters							
Stock Code	d1 x d2 (size)	L1 (in)	L1 (mm)	L2 (in)	L2 (mm)	L3 (in)	L3 (mm)
40301	3/8" PEX Crimp x 1/8" CTS (1/4" OD) Comp	1.09	27.7	1.17	29.7	0.55	14.0
40322	1/2" PEX Crimp x 1/8" CTS (1/4" OD) Comp	1.09	27.7	1.17	29.7	0.55	14.0



Brass Ice Maker Valve Kit Tees							
Stock Code	d1 x d3 (size)	L1 (in)	L1 (mm)	L2 (in)	L2 (mm)	L3 (in)	L3 (mm)
40503	3/8" PEX Crimp x 1/8" CTS (1/4" OD) Comp	1.83	46.5	1.03	26.2	0.59	15.0
40524	1/2" PEX Crimp x 1/8" CTS (1/4" OD) Comp	1.83	46.5	1.03	26.2	0.59	15.0



Brass PEX Crimp x Flare Adapter					
Stock Code	d x R (size)	L1 (in)	L1 (mm)	L2 (in)	L2 (mm)
40325	1/2" PEX Crimp x 1/2" Flare	1.50	3.81	0.87	22.1

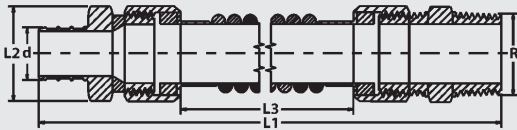
VIEGA ...The global leader in plumbing and heating systems.

301 N. Main, Floor 9 • Wichita, KS 67202 • Ph: 877-843-4262 • Fax: 316-425-7618 • E-Mail: service@viega.com • www.viega-na.com
 SP-PFPC-0908

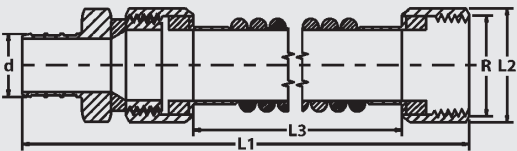
Dimensional Documentation

PEX Crimp Fittings

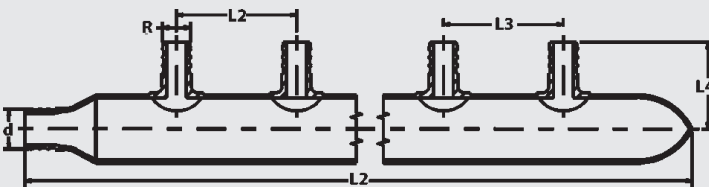
Brass/Copper PEX Crimp Water Heater Swivel Connector Male NPT							
Stock Code	d x R (size)	L1 (in)	L1 (mm)	L2 (in)	L2 (mm)	L3 (in)	L3 (mm)
47640	3/4" PEX Crimp x 3/4" M NPT	20.5	520.7	1.13	28.7	18.0	457.2



Brass/Copper PEX Crimp Water Heater Swivel Connector Female NPT							
Stock Code	d x R (size)	L1 (in)	L1 (mm)	L2 (in)	L2 (mm)	L3 (in)	L3 (mm)
47645	3/4" PEX Crimp x 3/4" F NPT	19.0	482.6	18.0	457.2	18.0	457.2

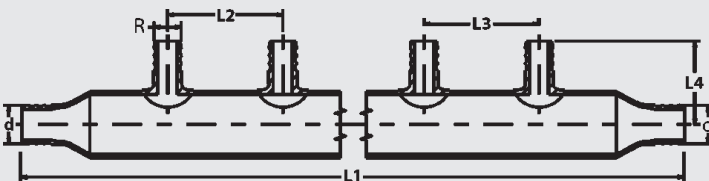


PEX Crimp Brazed Copper Manifolds Closed					
Stock Code	d x R (size)	L1 (in)	L1 (mm)	L2 (in)	L2 (mm)
44844	3/4" x (4) 1/2" PEX Crimp Outlets	10.7	271.8	2.00	50.8
44846	3/4" x (6) 1/2" PEX Crimp Outlets	14.7	373.4	2.00	50.8
44848	3/4" x (8) 1/2" PEX Crimp Outlets	18.7	475.0	2.00	50.8
44840	3/4" x (10) 1/2" PEX Crimp Outlets	22.7	576.6	2.00	50.8
44864	1" x (4) 1/2" PEX Crimp Outlets	11.6	294.6	2.00	50.8



L3 (in)	L3 (mm)	L4 (in)	L4 (mm)
2.00	50.8	1.47	37.3
2.00	50.8	1.47	37.3
2.00	50.8	1.47	37.3
2.00	50.8	1.47	37.3
2.00	50.8	1.47	37.3

PEX Crimp Brazed Copper Manifolds Flow Through					
Stock Code	d x R (size)	L1 (in)	L1 (mm)	L2 (in)	L2 (mm)
45844	3/4" X 3/4" X (4) 1/2" PEX Crimp Outlets	11.0	279.4	2.00	50.8
45846	3/4" X 3/4" X (6) 1/2" PEX Crimp Outlets	15.0	381.0	2.00	50.8
45848	3/4" X 3/4" X (8) 1/2" PEX Crimp Outlets	19.0	482.6	2.00	50.8
45864	1" X 1" X (4) 1/2" PEX Crimp Outlets	12.3	312.4	2.00	50.8

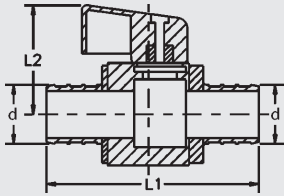


L3 (in)	L3 (mm)	L4 (in)	L4 (mm)
2.00	50.8	1.47	37.3
2.00	50.8	1.47	37.3
2.00	50.8	1.47	37.3
2.00	50.8	1.47	37.3

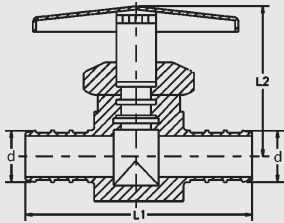
VIEGA ...The global leader in plumbing and heating systems.

Dimensional Documentation

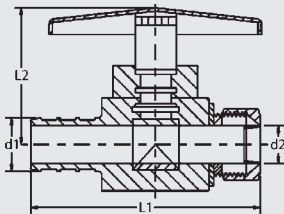
PEX Crimp Fittings



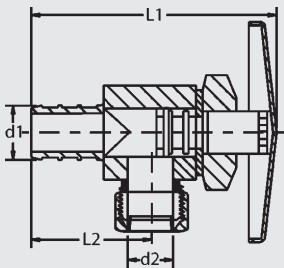
Brass PEX Crimp Ball Valve - Handle May Vary					
Stock Code	d (size)	L1 (in)	L1 (mm)	L2 (in)	L2 (mm)
40010	3/8" PEX Crimp	2.27	57.7	1.10	27.9
40020	1/2" PEX Crimp	2.15	54.6	1.10	27.9
40040	3/4" PEX Crimp	2.42	61.5	1.20	30.5



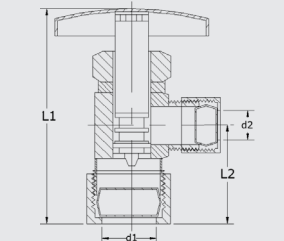
Copper PEX Crimp Ball Valve - Handle May Vary					
Stock Code	d (size)	L1 (in)	L1 (mm)	L2 (in)	L2 (mm)
44060	1" X 1" PEX Crimp	5.72	145.3	2.80	71.1



Brass PEX Crimp Ball Valve - Multi-turn					
Stock Code	d (size)	L1 (in)	L1 (mm)	L2 (in)	L2 (mm)
40011	1/2" PEX Crimp - Multi-turn	2.37	60.2	1.40	35.6



Chrome PEX Crimp Ball Valves - Multi-turn					
Stock Code	d (size)	L1 (in)	L1 (mm)	L2 (in)	L2 (mm)
42021	1/2" PEX Crimp - Multi-turn	2.17	55.1	1.40	35.6



Chrome PEX Crimp Straight Stop Valve - Handle May Vary					
Stock Code	d1 x d2 (size)	L1 (in)	L1 (mm)	L2 (in)	L2 (mm)
42001	3/8" PEX Crimp x 1/4" CTS (3/8" OD) Comp - 1/4 turn	2.78	70.6	1.25	31.8
42022	1/2" PEX Crimp x 1/4" CTS (3/8" OD) Comp - Multi-turn	2.12	53.8	1.30	33.0

Chrome PEX Crimp Angle Stop Valve - Multi-turn					
Stock Code	d1 x d2 (size)	L1 (in)	L1 (mm)	L2 (in)	L2 (mm)
42002	3/8" PEX Crimp x 1/4" CTS (3/8" OD) Comp - Multi-turn	2.80	71.1	1.60	40.6
42025	1/2" PEX Crimp x 1/4" CTS (3/8" OD) Comp - Multi-turn	2.15	54.6	0.90	22.9

Chrome Compression Angle Stop Valve - Multi-turn					
Stock Code	d1 x d2 (size)	L1 (in)	L1 (mm)	L2 (in)	L2 (mm)
42023	1/2" CTS (5/8" OD) Comp x 1/4" CTS (3/8" OD) Comp	2.45	62.2	1.20	30.5

VIEGA ...The global leader in plumbing and heating systems.

301 N. Main, Floor 9 • Wichita, KS 67202 • Ph: 877-843-4262 • Fax: 316-425-7618 • E-Mail: service@viega.com • www.viega-na.com
 SP-PFPC-0908