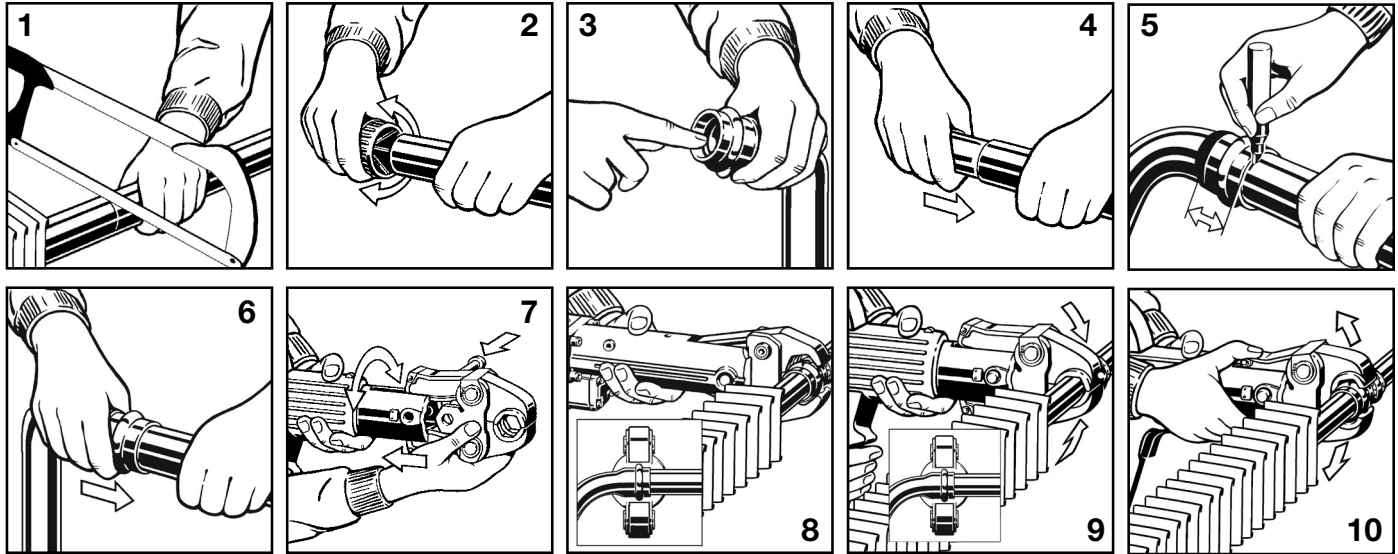


Product Instructions

viEGA

Baseboard Kit



ProPress Insertion Depth Chart

Tube Size	3/4"
Insetion Depth	7/8"

1. Cut copper finned tubing at right angles using displacement type cutter or fine-toothed steel saw.
2. Remove burr from inside and outside of finned tubing to prevent cutting sealing element.
3. Check seal for correct fit. Do not use oils or lubricants. Use only ProPress Shiny Black EPDM or Dull Black FKM sealing element.
4. Insert tube stiffener into finned tube Note: Stiffener must be inserted prior to attaching press fitting.
5. Mark proper insertion depth as indicated by the ProPress Insertion Depth Chart. Improper insertion depth may result in improper seal.
6. While turning slightly, slide press fitting onto tubing to the marked depth. Note: End of tubing must contact stop.
7. Insert appropriate Viega jaw into the pressing tool and push in holding pin until it locks in place.
8. Open the jaw and place at right angles on the fitting. Visually check insertion depth using mark on tubing.
9. Start pressing process and hold the trigger until the jaw has engaged the fitting.
10. After pressing, the jaw can be opened again



Pressure Testing: Pressure testing is to be carried out in accordance with local codes. ProPress includes the Smart Connect (SC) Feature providing quick and easy identification of **unpressed** connections during the pressure testing process. **Unpressed connections are located by pressurizing the system with air or water. When testing with air the pressure range is 1/2 PSI to 85 PSI maximum. When testing with water the pressure range is 15 PSI to 85 PSI maximum.** The SC Feature is an integral part of the design of the fitting assuring leakage of liquids and/or gases from inside the system past the sealing element of an unpressed connection. The SC Feature is removed during the pressing process creating a leak-proof, permanent connection.

Viega... The global leader in plumbing, heating and pipe joining systems

301 N. Main, 9th Floor • Wichita, KS 67202 • Ph: 800-976-9819 • Fax: 316-425-7618 • www.viega.com

©2011, ProPress®, FostaPEX®, Seapress®, MegaPress®, MegaPressG® and Viega® are registered trademarks of Viega GmbH & Co. PureFlow®, Smart Connect®, Climate Panel®, Climate Mat®, Climate Trak®, MANABLOC®, Radiant Wizard®, S-no-Ice®, Snap Panel®, XL® and XL-C® are registered trademarks of Viega LLC. MiniBloc™, ProRadiant™, PolyAlloy™, SmartLoop™ and Zero Lead™ are trademarks of Viega LLC; GeoFusion™, ProPressG™ and ViegaPEX™ are trademarks of Viega GmbH & Co. KG.

PI-PR-519998 0212 (Baseboard Kit)